

# 137 East 25th Street

Between Lexington and 3rd Avenues

## Adaptable Space

Premises:	Entire 6th Floor
Area:	7,700 rsf
Term:	5-10 years
Asking Rent:	Very Flexible
Electric:	Directly metered



### Features:

- Clean open space with new hardwood floors
- New tenant controlled package A/C unit
- New bathrooms
- Bright space with lots of windows (3 sides)
- Two possible entrances (26th Street also)



For more information,  
please contact:

### Scott M. Bloom

President/Managing Member  
o (212) 342-7474  
m (917) 327-2109  
sbloom@bloomreg.com

Bloom Real Estate Group LLC  
485 Madison Avenue  
New York, NY 10022  
(212) 342-7444

[www.bloomreg.com](http://www.bloomreg.com)

**BLOOM**  
REAL ESTATE GROUP

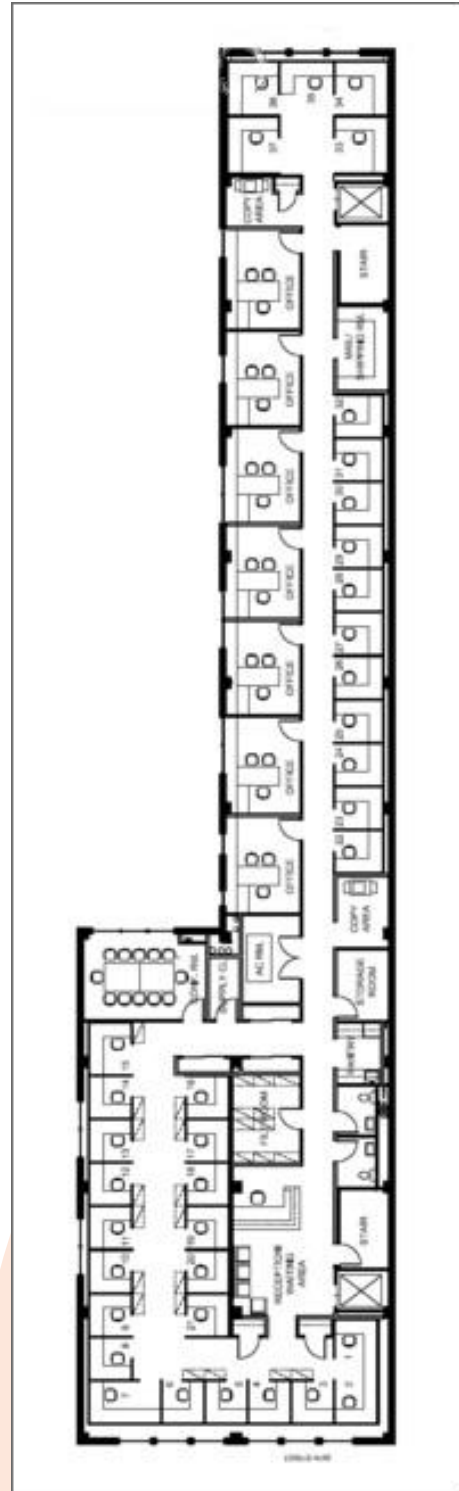
**REBNY**  
REAL ESTATE BOARD OF NEW YORK

No representation is made to the accuracy of the information furnished herein, and same is submitted subject to errors, omissions, changes, prior sale, lease, and/or withdrawal without notice. The furnishing of this information shall not be deemed a hiring. A commission, in accordance with our principal's schedule of rates and conditions, will be paid to the procuring Broker executing owner's brokerage agreement who fully consummates a transaction upon terms and conditions acceptable to our principal.

# 137 East 25th Street

Between Lexington and 3rd Avenues

## Adaptable Space



## Proposed Floor Plan

For more information,  
please contact:

**Scott M. Bloom**

President/Managing Member

o (212) 342-7474

m (917) 327-2109

sbloom@bloomreg.com

Bloom Real Estate Group LLC

485 Madison Avenue

New York, NY 10022

(212) 342-7444

[www.bloomreg.com](http://www.bloomreg.com)

**BLOOM**  
REAL ESTATE GROUP

**REBNY**  
REAL ESTATE BOARD OF NEW YORK

No representation is made to the accuracy of the information furnished herein, and same is submitted subject to errors, omissions, changes, prior sale, lease, and/or withdrawal without notice. The furnishing of this information shall not be deemed a hiring. A commission, in accordance with our principal's schedule of rates and conditions, will be paid to the procuring Broker executing owner's brokerage agreement who fully consummates a transaction upon terms and conditions acceptable to our principal.