

142 East 49th Street

Between Lexington and 3rd Avenues

Direct Retail/Office Space

Premises: 644 rsf

Term: Short or Long Term

Availability: February 2010

Rent: Asking \$5,000/month

For more information,
please contact:

Alan Tuckerman

Director

o (212) 342-7447

m (646) 641-4205

atuckerman@bloomreg.com

Scott M. Bloom

President/Managing Member

o (212) 342-7474

m (917) 327-2109

sbloom@bloomreg.com

Bloom Real Estate Group LLC

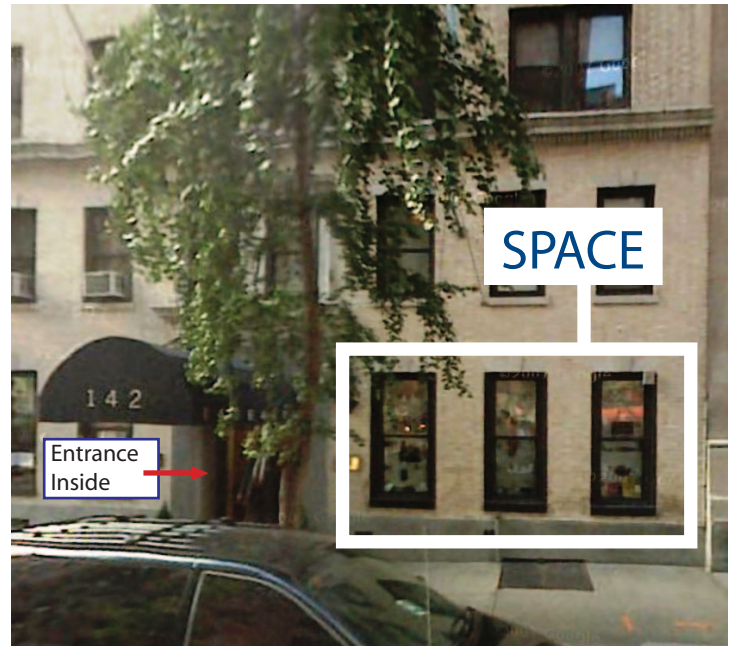
485 Madison Avenue

New York, NY 10022

(212) 342-7444

www.bloomreg.com

BLOOM
REAL ESTATE GROUP



Features:

- Access through attended building lobby
- Display windows on street level
- Separate storage room in basement



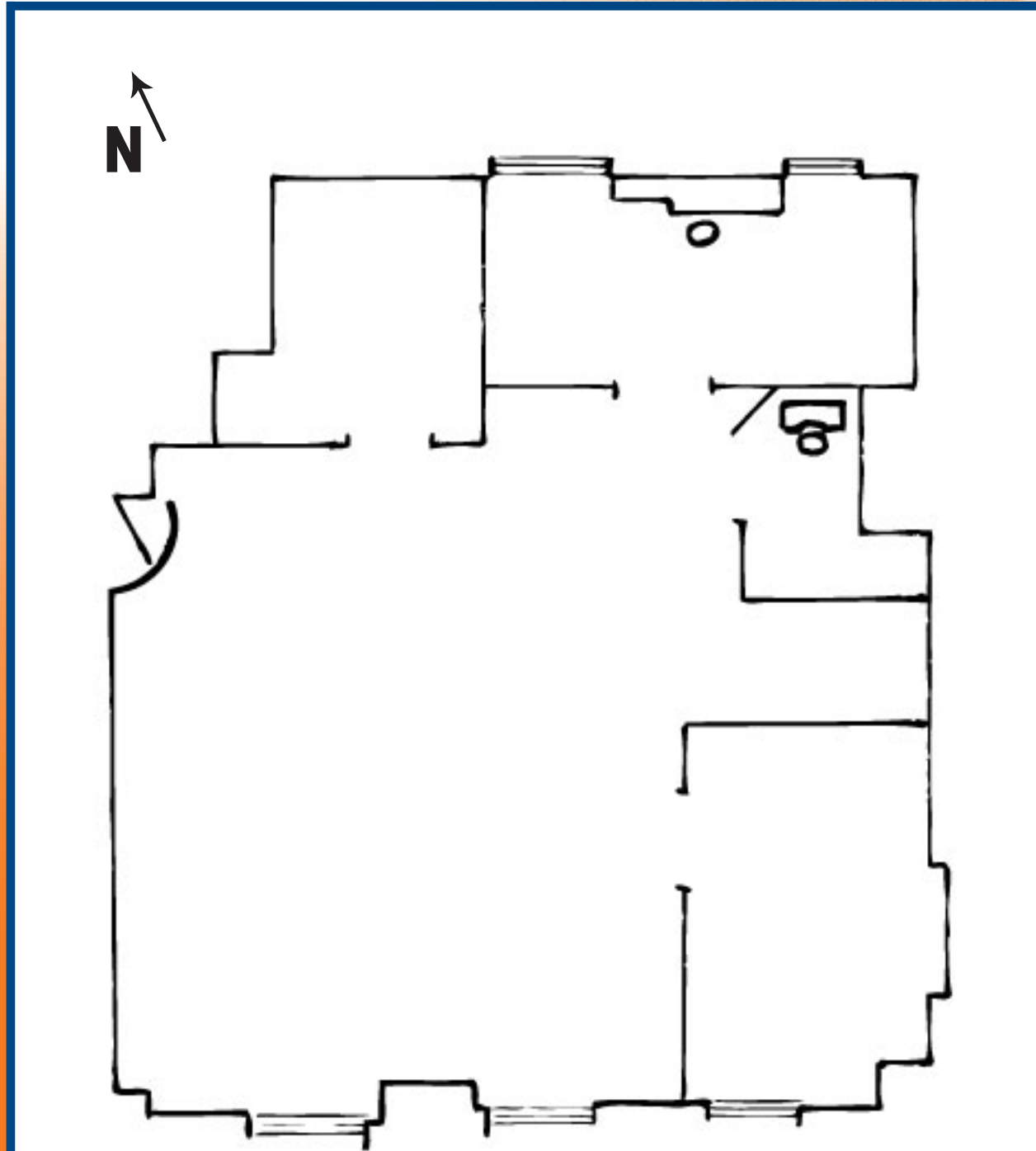
No representation is made to the accuracy of the information furnished herein, and same is submitted subject to errors, omissions, changes, prior sale, lease, and/or withdrawal without notice. The furnishing of this information shall not be deemed a hiring. A commission, in accordance with our principal's schedule of rates and conditions, will be paid to the procuring Broker executing owner's brokerage agreement who fully consummates a transaction upon terms and conditions acceptable to our principal.

REBNY
REAL ESTATE BOARD OF NEW YORK

142 East 49th Street

Between Lexington and 3rd Avenues

Direct Retail/Office space



For more information,
please contact:

Alan Tuckerman

Director

o (212) 342-7447

m (646) 641-4205

atuckerman@bloomreg.com

Scott M. Bloom

President/Managing Member

o (212) 342-7474

m (917) 327-2109

sbloom@bloomreg.com

Bloom Real Estate Group LLC

485 Madison Avenue

New York, NY 10022

(212) 342-7444

www.bloomreg.com

49th Street

REBNY
REAL ESTATE BOARD OF NEW YORK

No representation is made to the accuracy of the information furnished herein, and same is submitted subject to errors, omissions, changes, prior sale, lease, and/or withdrawal without notice. The furnishing of this information shall not be deemed a hiring. A commission, in accordance with our principal's schedule of rates and conditions, will be paid to the procuring Broker executing owner's brokerage agreement who fully consummates a transaction upon terms and conditions acceptable to our principal.

BLOOM
REAL ESTATE GROUP