

230 Park Avenue

Between 45th and 46th Streets

Built Office Sublease

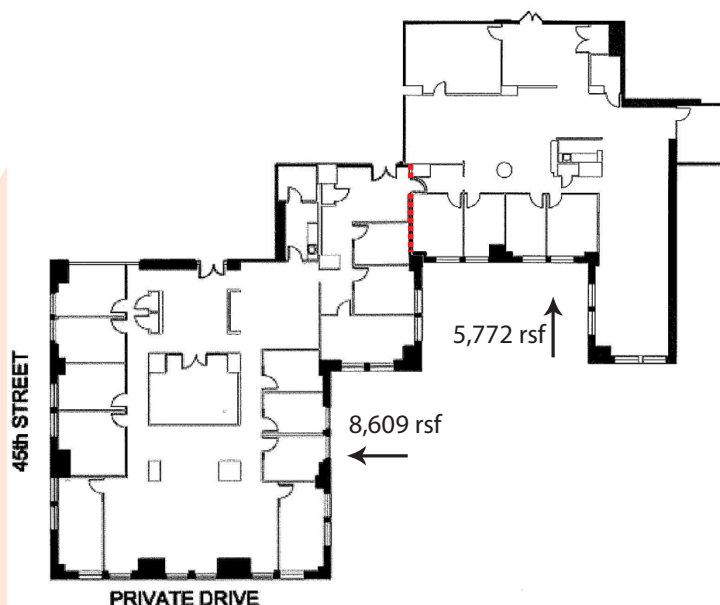
Premises:	Part 9th Floor
Area:	14,381 rsf (Divisible to: 8,609 rsf & 5,772 rsf)
Term:	Through July 31st, 2017
Availability:	Immediate
Rent:	Very aggressive



FEATURES:

Each suite contains:

- Executive Offices
- Conference Room
- Reception
- Bullpen Area
- Pantry
- Storage room also available
- Furniture & phones available



For more information,
please contact:

Brian Scharfman

Associate

o (212) 342-7467

m (914) 715-6673

bscharfman@bloomreg.com

Scott M. Bloom

President/Managing Member

o (212) 342-7474

m (917) 327-2109

sbloom@bloomreg.com

Bloom Real Estate Group LLC

485 Madison Avenue

New York, NY 10022

(212) 342-7444

www.bloomreg.com

REBNY
REAL ESTATE BOARD OF NEW YORK

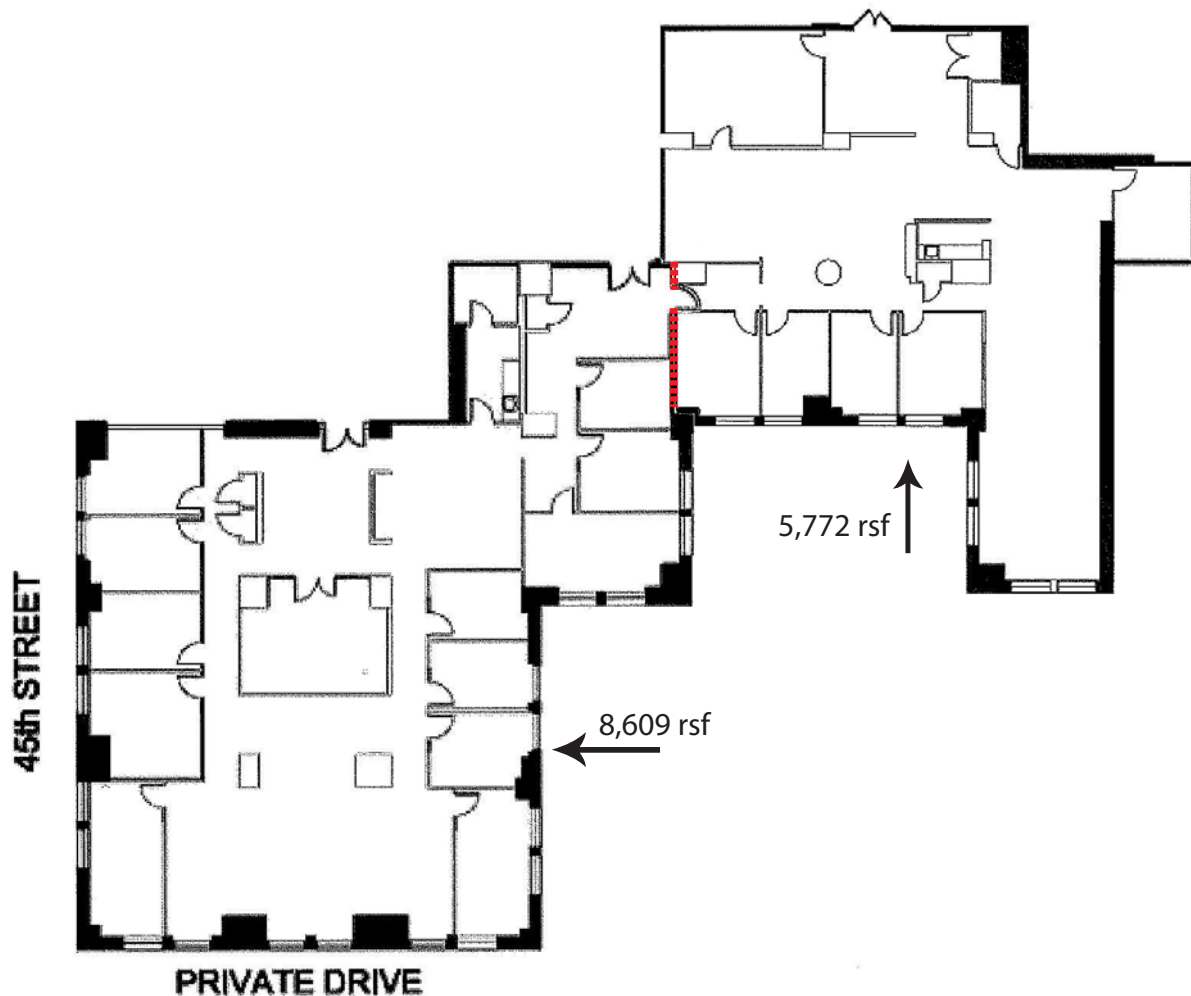
No representation is made to the accuracy of the information furnished herein, and same is submitted subject to errors, omissions, changes, prior sale, lease, and/or withdrawal without notice. The furnishing of this information shall not be deemed a hiring. A commission, in accordance with our principal's schedule of rates and conditions, will be paid to the procuring Broker executing owner's brokerage agreement who fully consummates a transaction upon terms and conditions acceptable to our principal.

BLOOM
REAL ESTATE GROUP

230 Park Avenue

Between 45th and 46th Streets

Built Office Sublease



For more information,
please contact:

Brian Scharfman

Associate

o (212) 342-7467

m (914) 715-6673

bscharfman@bloomreg.com

Scott M. Bloom

President/Managing Member

o (212) 342-7474

m (917) 327-2109

sbloom@bloomreg.com

Bloom Real Estate Group LLC

485 Madison Avenue

New York, NY 10022

(212) 342-7444

www.bloomreg.com

BLOOM
REAL ESTATE GROUP

REBNY
REAL ESTATE BOARD OF NEW YORK

No representation is made to the accuracy of the information furnished herein, and same is submitted subject to errors, omissions, changes, prior sale, lease, and/or withdrawal without notice. The furnishing of this information shall not be deemed a hiring. A commission, in accordance with our principal's schedule of rates and conditions, will be paid to the procuring Broker executing owner's brokerage agreement who fully consummates a transaction upon terms and conditions acceptable to our principal.