

# 405 Lexington Avenue

## Chrysler Building

## Office Sublease

Premises: Suite 3503

Area: 2,210 rsf

Term: April 29, 2015

Availability: Vacant

Rent: Very negotiable



For more information,  
please contact:

### Susann L. Eaton

Director

o (212) 342-7470

m (917) 301-3505

seaton@bloomreg.com

### Scott M. Bloom

President/Managing Member

o (212) 342-7474

m (917) 327-2109

sbloom@bloomreg.com

Bloom Real Estate Group LLC

485 Madison Avenue

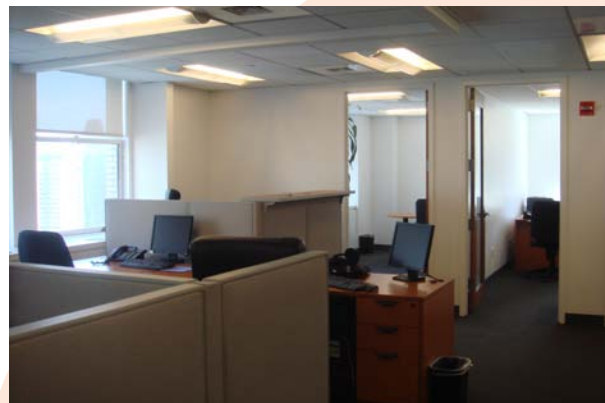
New York, NY 10022

(212) 342-7444

[www.bloomreg.com](http://www.bloomreg.com)

## FEATURES:

- Move-in condition
- Furniture & phones available
- Pantry



**REBNY**  
REAL ESTATE BOARD OF NEW YORK

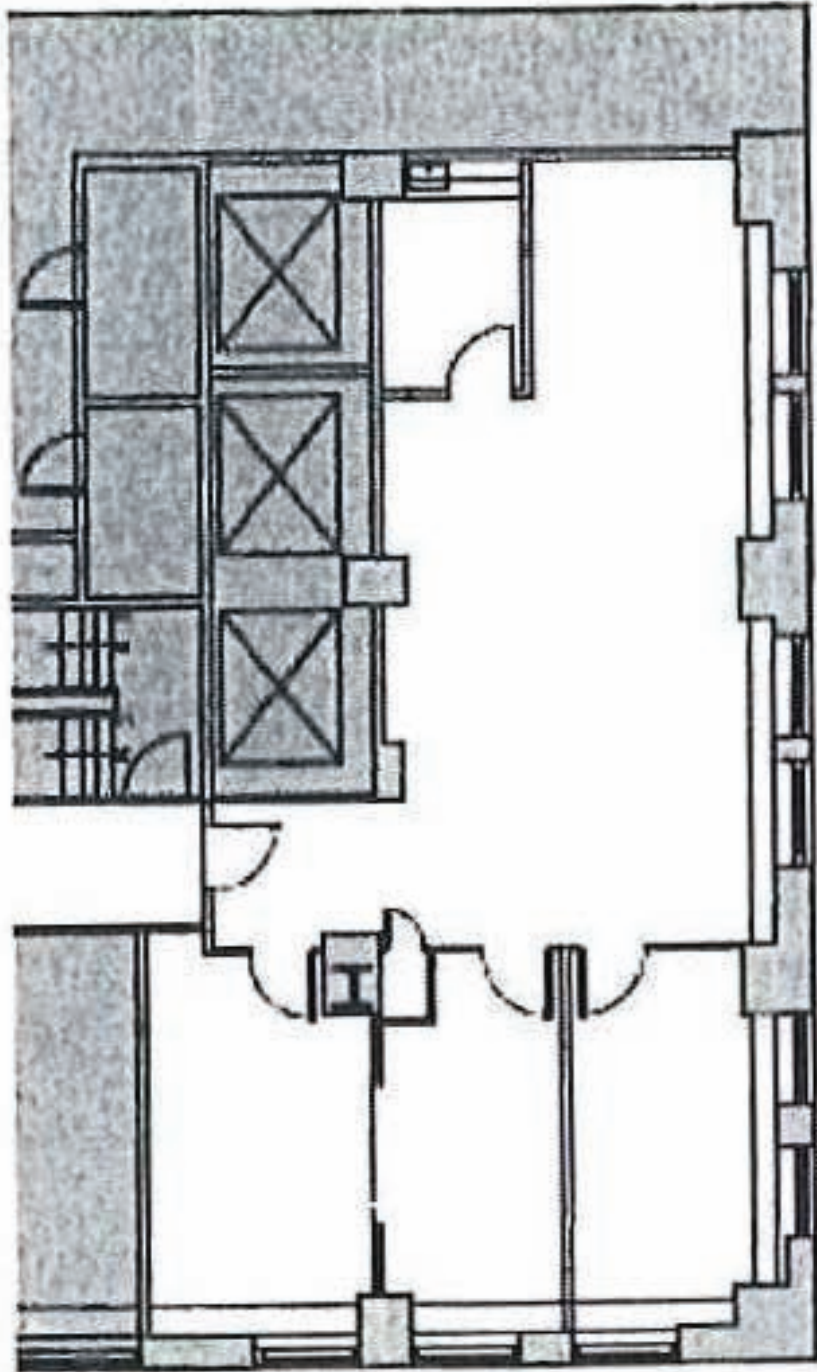
No representation is made to the accuracy of the information furnished herein, and same is submitted subject to errors, omissions, changes, prior sale, lease, and/or withdrawal without notice. The furnishing of this information shall not be deemed a hiring. A commission, in accordance with our principal's schedule of rates and conditions, will be paid to the procuring Broker executing owner's brokerage agreement who fully consummates a transaction upon terms and conditions acceptable to our principal.

**BLOOM**  
REAL ESTATE GROUP

# 405 Lexington Avenue

## Chrysler Building

### Office Sublease



**N  
O  
R  
T  
H**

**EAST**

For more information,  
please contact:

**Susann L. Eaton**

Director

o (212) 342-7470

m (917) 301-3505

seaton@bloomreg.com

**Scott M. Bloom**

President/Managing Member

o (212) 342-7474

m (917) 327-2109

sbloom@bloomreg.com

Bloom Real Estate Group LLC

485 Madison Avenue

New York, NY 10022

(212) 342-7444

[www.bloomreg.com](http://www.bloomreg.com)

**REBNY**  
REAL ESTATE BOARD OF NEW YORK

No representation is made to the accuracy of the information furnished herein, and same is submitted subject to errors, omissions, changes, prior sale, lease, and/or withdrawal without notice. The furnishing of this information shall not be deemed a hiring. A commission, in accordance with our principal's schedule of rates and conditions, will be paid to the procuring Broker executing owner's brokerage agreement who fully consummates a transaction upon terms and conditions acceptable to our principal.

**BLOOM**  
REAL ESTATE GROUP