

6103 Strickland Avenue

Mill Basin, Brooklyn

For Lease/Sale Or Development

Zoning:

R3-1 in M3-1
(recently rezoned-
Variance for 45
apartments and offices
on 1st floor)

Ground Area:

101,000 sf
4 story Masonry Building
Block 8470 lots 1090,
p/o 1091

Population:

86,000-1 mile
535,000-5 miles
Total households:
31,000-1 mile

For more information,
please contact:

Elliot Zelinger

Director

o (212) 342-7450

m (516) 317-9460

ezelinger@bloomreg.com

Scott M. Bloom

President/Managing Member

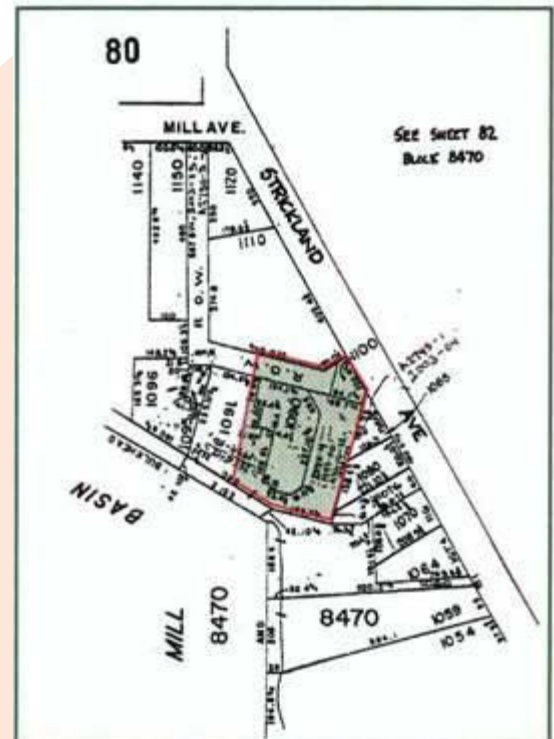
o (212) 342-7474

m (917) 327-2109

sbloom@bloomreg.com

Features:

- Building located in one of Brooklyn's most affluent neighborhoods
- Public and private schools, synagogues and churches within walking distance
- Nearby Gateway Recreational Area, golf, aviator center (like Chelsea Piers), marine recreation, beaches
- Neighbors include Kings Plaza Mall, Home Depot (New Lowes), Gold's Gym
- Restaurants and bowling within walking distance

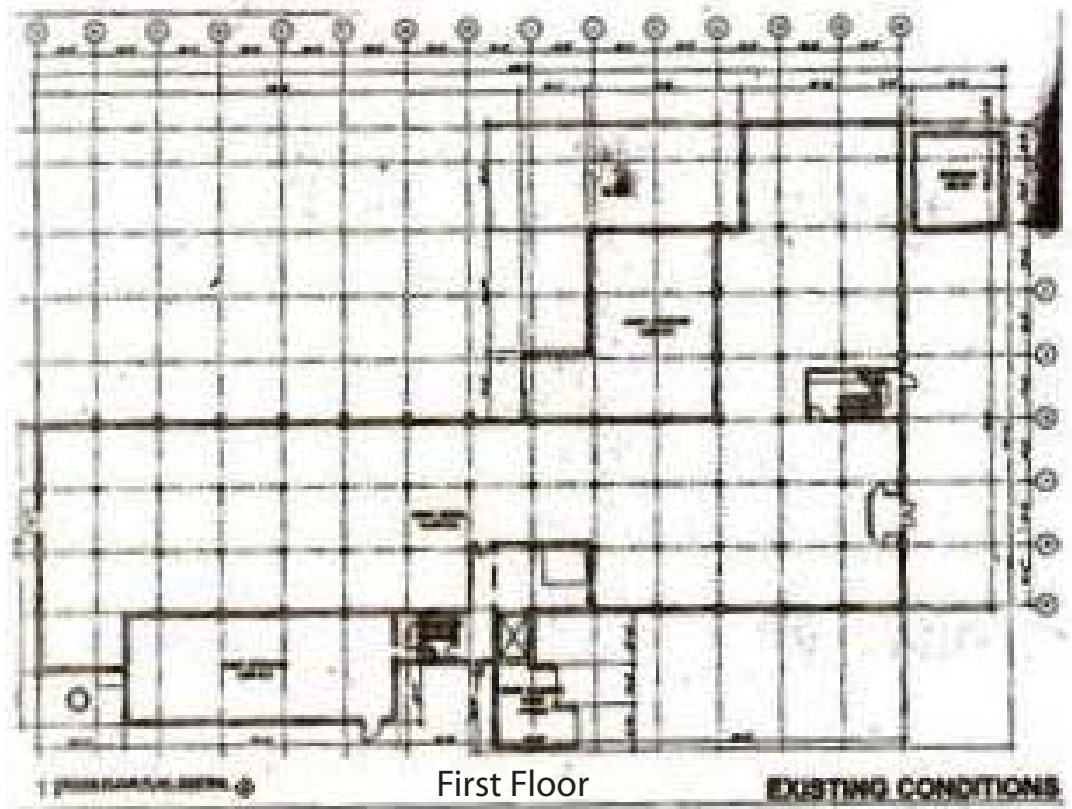


No representation is made to the accuracy of the information furnished herein, and same is submitted subject to errors, omissions, changes, prior sale, lease, and/or withdrawal without notice. The furnishing of this information shall not be deemed a hiring. A commission, in accordance with our principal's schedule of rates and conditions, will be paid to the procuring Broker executing owner's brokerage agreement who fully consummates a transaction upon terms and conditions acceptable to our principal.

6103 Strickland Avenue

Mill Basin, Brooklyn

For Lease/Sale Or Development



For more information,
please contact:

Elliot Zelinger

Director

o (212) 342-7450

m (516) 317-9460

ezelinger@bloomreg.com

Scott M. Bloom

President/Managing Member

o (212) 342-7474

m (917) 327-2109

sbloom@bloomreg.com

Bloom Real Estate Group LLC

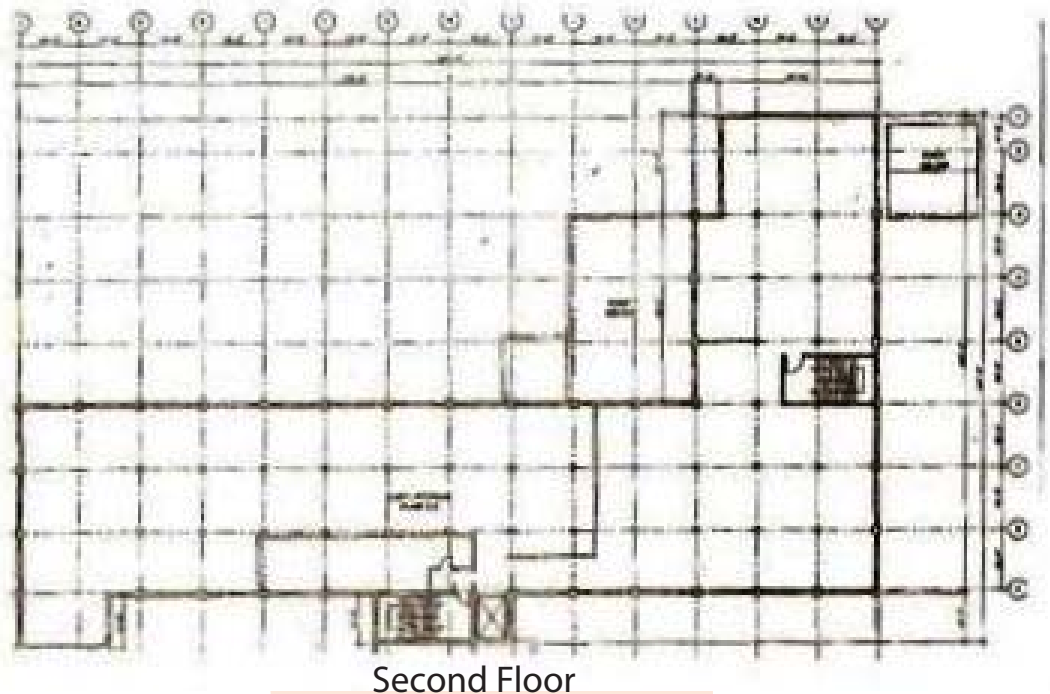
485 Madison Avenue

New York, NY 10022

(212) 342-7444

www.bloomreg.com

BLOOM
REAL ESTATE GROUP

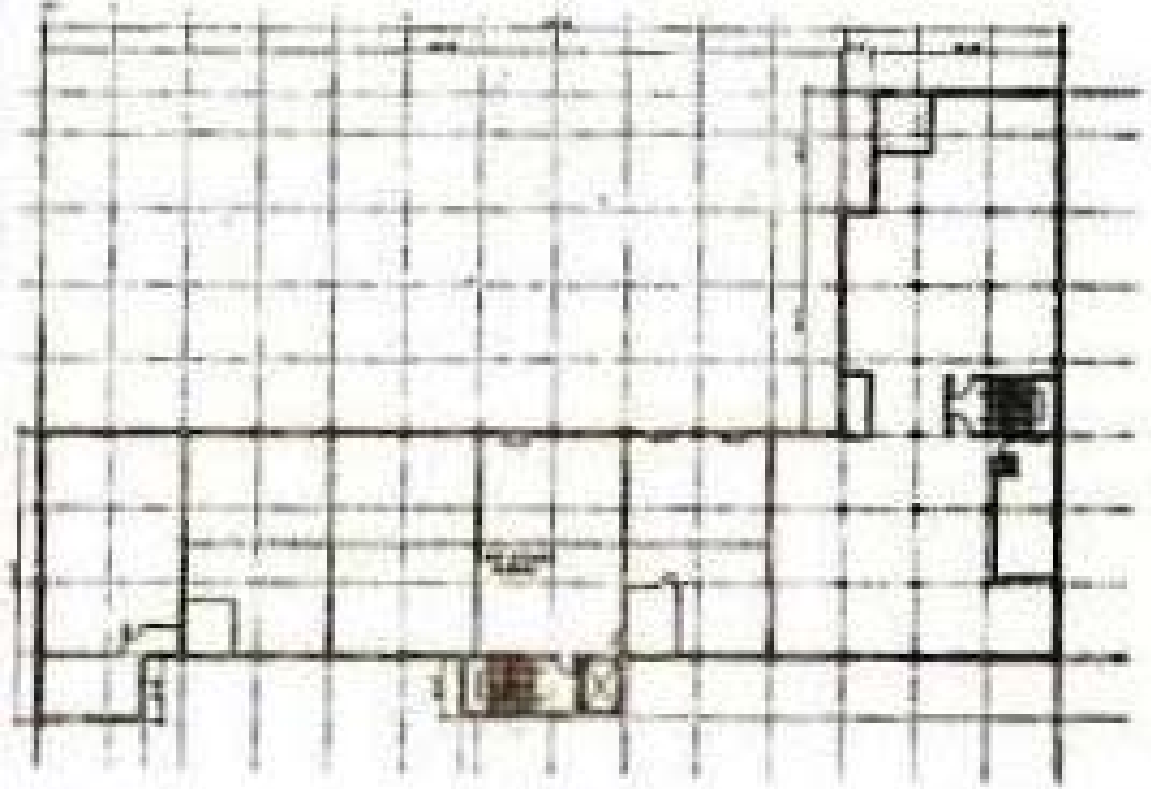


No representation is made to the accuracy of the information furnished herein, and same is submitted subject to errors, omissions, changes, prior sale, lease, and/or withdrawal without notice. The furnishing of this information shall not be deemed a hiring. A commission, in accordance with our principal's schedule of rates and conditions, will be paid to the procuring Broker executing owner's brokerage agreement who fully consummates a transaction upon terms and conditions acceptable to our principal.

6103 Strickland Avenue

Mill Basin, Brooklyn

For Lease/Sale Or Development



Third Floor

For more information,
please contact:

Elliot Zelinger

Director

o (212) 342-7450

m (516) 317-9460

ezelinger@bloomreg.com

Scott M. Bloom

President/Managing Member

o (212) 342-7474

m (917) 327-2109

sbloom@bloomreg.com

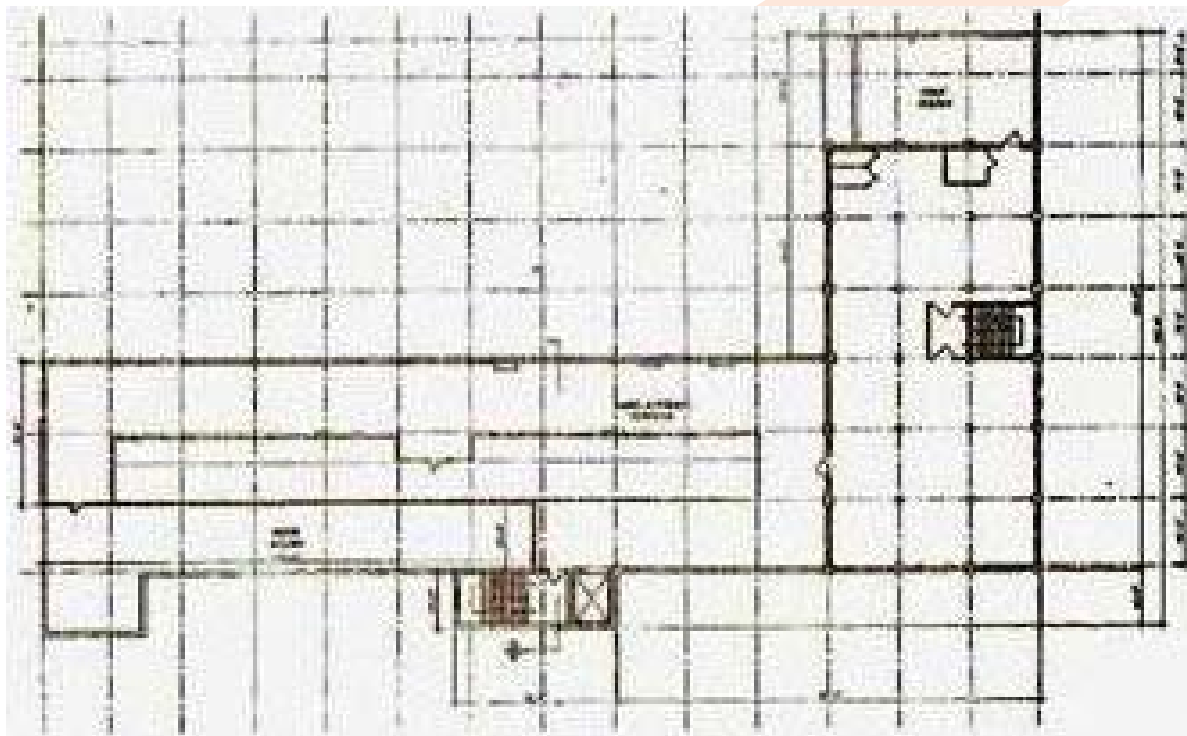
Bloom Real Estate Group LLC

485 Madison Avenue

New York, NY 10022

(212) 342-7444

www.bloomreg.com



Fourth Floor

No representation is made to the accuracy of the information furnished herein, and same is submitted subject to errors, omissions, changes, prior sale, lease, and/or withdrawal without notice. The furnishing of this information shall not be deemed a hiring. A commission, in accordance with our principal's schedule of rates and conditions, will be paid to the procuring Broker executing owner's brokerage agreement who fully consummates a transaction upon terms and conditions acceptable to our principal.

BLOOM
REAL ESTATE GROUP