

99 Park Avenue

Between 39th and 40th Streets

Office Sublease

Premises: Partial 22nd Floor

Area: 1,052 rsf

Term: Through May, 2012

Availability: Immediate - Vacant

TOTAL Rent: \$5,000/month
ZERO other charges

For more information,
please contact:

Todd Hershman

Associate

o (212) 342-7461

m (917) 282-0994

thershman@bloomreg.com

Susann L. Eaton

Director

o (212) 342-7470

m (917) 301-3505

seaton@bloomreg.com

Scott M. Bloom

President/Managing Member

o (212) 342-7474

m (917) 327-2109

sbloom@bloomreg.com

Bloom Real Estate Group LLC

485 Madison Avenue

New York, NY 10022

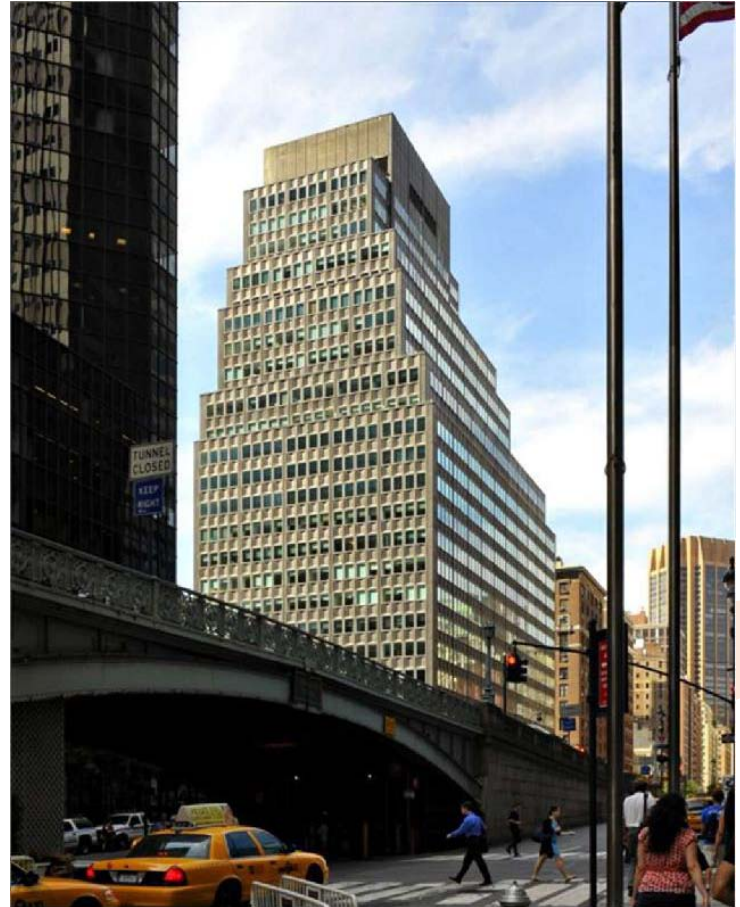
(212) 342-7444

www.bloomreg.com

BLOOM
REAL ESTATE GROUP

FEATURES:

- Furniture & phones included
- Move-in Condition
- Floor Plan on back of flyer



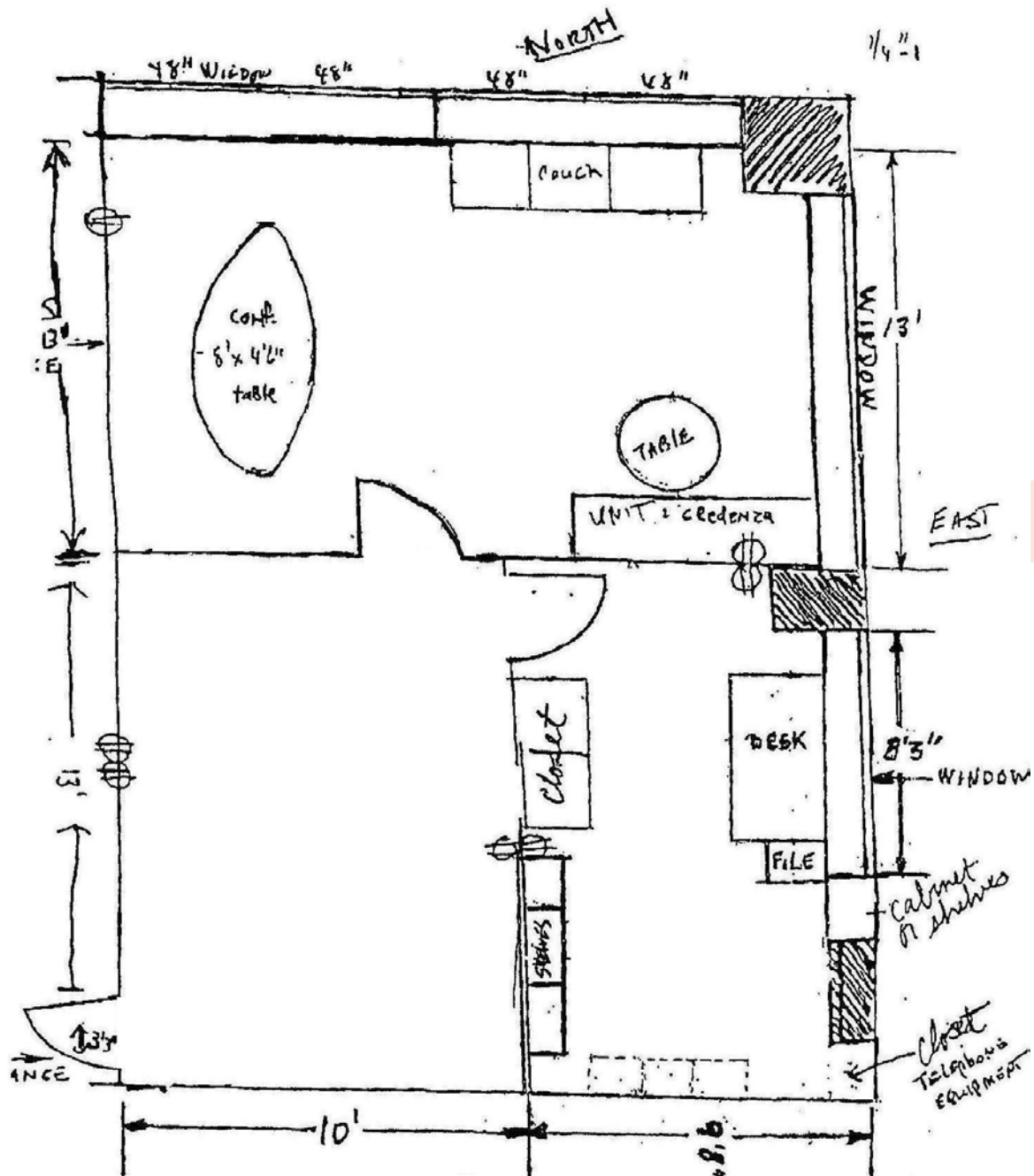
REBNY
REAL ESTATE BOARD OF NEW YORK

No representation is made to the accuracy of the information furnished herein, and same is submitted subject to errors, omissions, changes, prior sale, lease, and/or withdrawal without notice. The furnishing of this information shall not be deemed a hiring. A commission, in accordance with our principal's schedule of rates and conditions, will be paid to the procuring Broker executing owner's brokerage agreement who fully consummates a transaction upon terms and conditions acceptable to our principal.

99 Park Avenue

Between 39th and 40th Streets

Office Sublease



For more information,
please contact:

Todd Hershman

Associate

o (212) 342-7461

m (917) 282-0994

thershman@bloomreg.com

Susann L. Eaton

Director

o (212) 342-7470

m (917) 301-3505

seaton@bloomreg.com

Scott M. Bloom

President/Managing Member

o (212) 342-7474

m (917) 327-2109

sbloom@bloomreg.com

Bloom Real Estate Group LLC

485 Madison Avenue

New York, NY 10022

(212) 342-7444

www.bloomreg.com

REBNY
REAL ESTATE BOARD OF NEW YORK

No representation is made to the accuracy of the information furnished herein, and same is submitted subject to errors, omissions, changes, prior sale, lease, and/or withdrawal without notice. The furnishing of this information shall not be deemed a hiring. A commission, in accordance with our principal's schedule of rates and conditions, will be paid to the procuring Broker executing owner's brokerage agreement who fully consummates a transaction upon terms and conditions acceptable to our principal.

BLOOM
REAL ESTATE GROUP